

Yurok Reservation



MARIJUANA CULTIVATION SITES ON AND AROUND THE YUOK RESERVATION

There are no community water systems in this area. Each residence has to obtain household water directly from a stream or a spring, making it more likely for residents to suffer negative impacts from chemical fertilizers, solid waste, and sediment due to marijuana cultivation.

Legend:

- Residence
- Cultivation Sites
- Private Water Intake (Not Comprehensive)
- Community Water Intake
- Stream
- Yurok Reservation

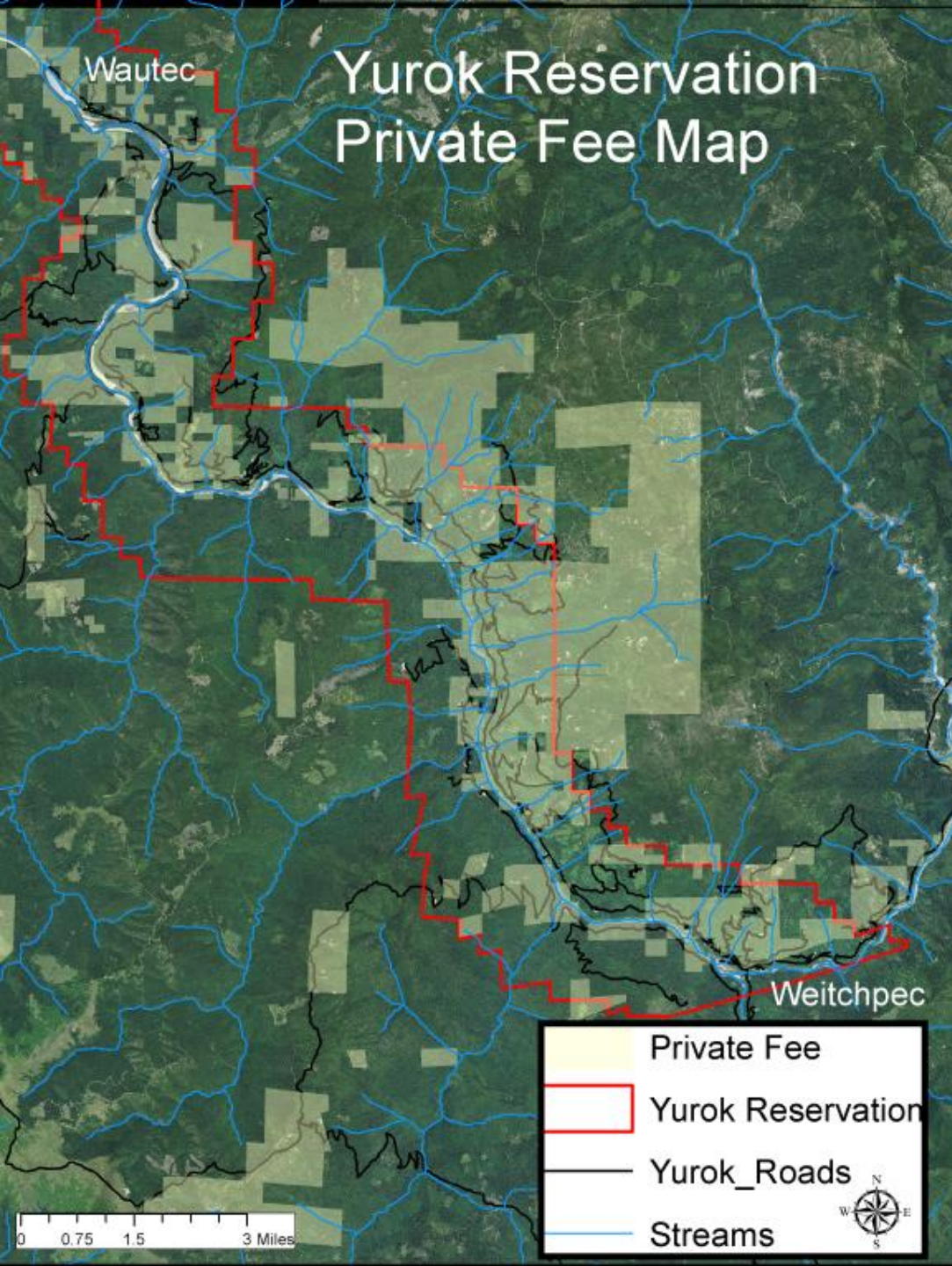
Scale: 0 0.5 1 2 Miles

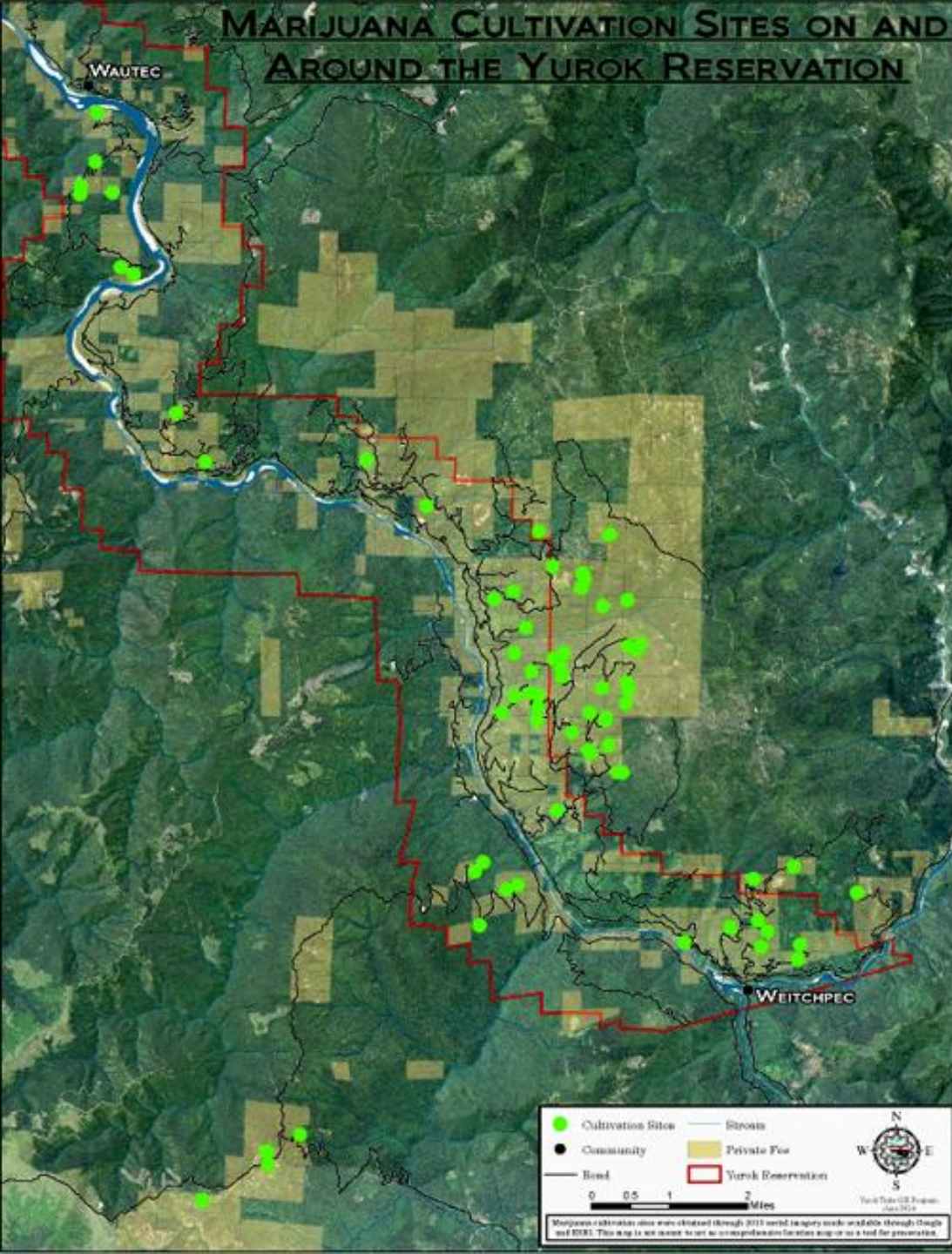
North Arrow

Map data: Marijuana cultivation sites were obtained through 2012 aerial imagery made available through Google and ESRI. This map is not meant to act as a comprehensive location map or as a tool for prosecution.

Yurok Tribe GIS Program
June 2014









BEFORE
***2012**



AFTER
***2014**















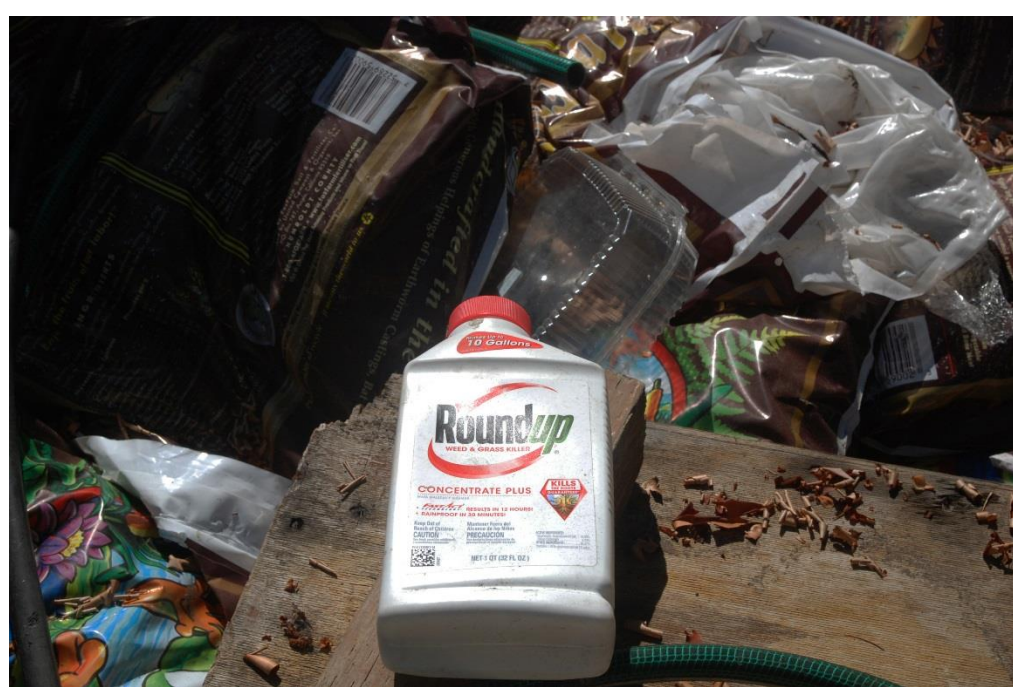














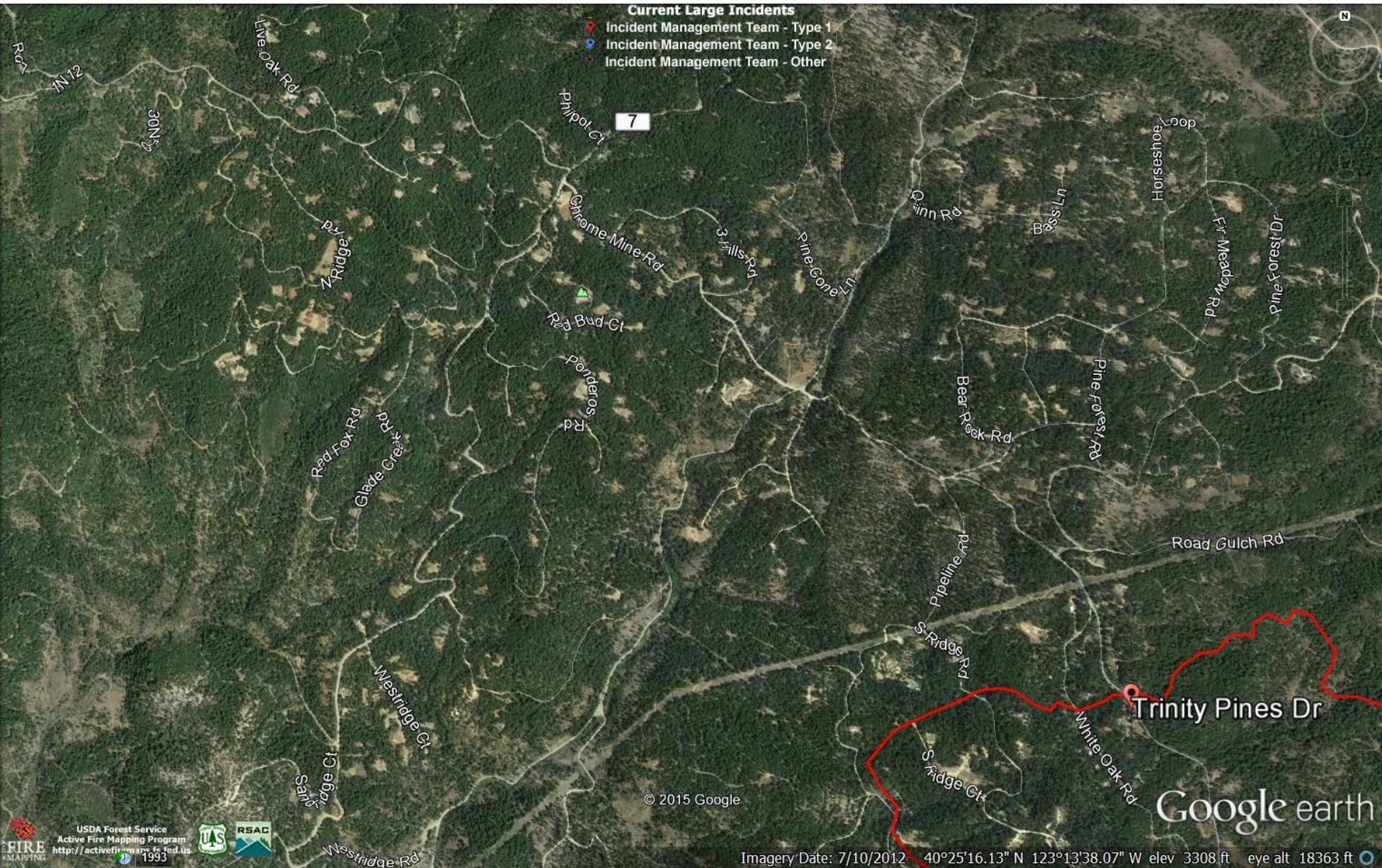












USDA Forest Service
Active Fire Mapping Program
<http://activefiremaps.fs.fed.us>
1993



Google earth

Law enforcement collaboration

- Operation Yurok consisted of tribal, federal and state law enforcement officers. The Yurok Tribe would like to thank the following law enforcement agencies: California National Guard Counterdrug Taskforce, Bureau of Land Management, BIA, Humboldt County Sheriffs Office, California Department of Fish and Wildlife, Humboldt County District Attorney's office, Marin County Sheriffs office, and the California Water Board.

